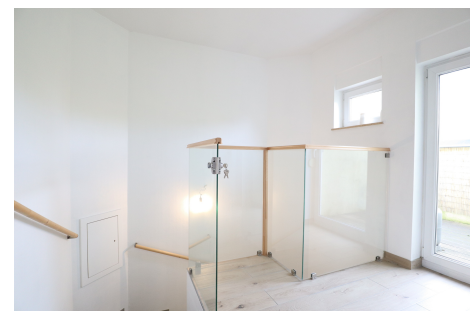




Duplex
117m² 3 Bedroom(s)
Schifflange

699 000€



DESCRIPTION

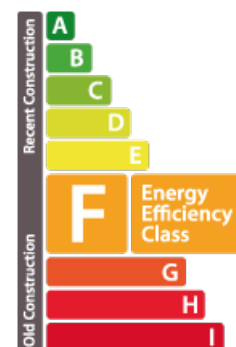
The real estate agency House Dream offers you in exclusivity this charming apartment (Duplex) of +117m² on the 2nd floor with elevator, close to all amenities in Schifflange. The apartment is composed as follows: Second floor: Entrance hall Independent equipped kitchen Living room/ dining room Separate toilet Second floor: 3 bedrooms Bathroom with Italian shower, bathtub, sink and toilet Storage room Balcony The property is accessible via a secure elevator. To complete this offer, the property also has a garage box and an outdoor space. Agency fees are at the seller's expense. Do not hesitate to contact us if you have a property for sale or rent! We are constantly looking for apartments, houses and building plots for sale or rent for our existing clientele. We are also available on Saturdays for visits, depending on the availability of the owners. To obtain your credit, our relations with our financial partners will allow you to have the best conditions. Do not hesitate to visit our website www.housedre...

CHARACTERISTICS

Number of pieces : 5
Nb. chamber (s) : 3
Area : 117m²
Nb. of bathrooms : 1
Equipped kitchen : Oui

ENERGY PASS

Energy class



CO2 emissions Class

E

✓ House dream

📍 14/16 rue Michel Rodange L-2430

📞 27 77 00 78

✉ contact@housedream.lu

🌐 <https://www.housedream.lu/en/detail-538>